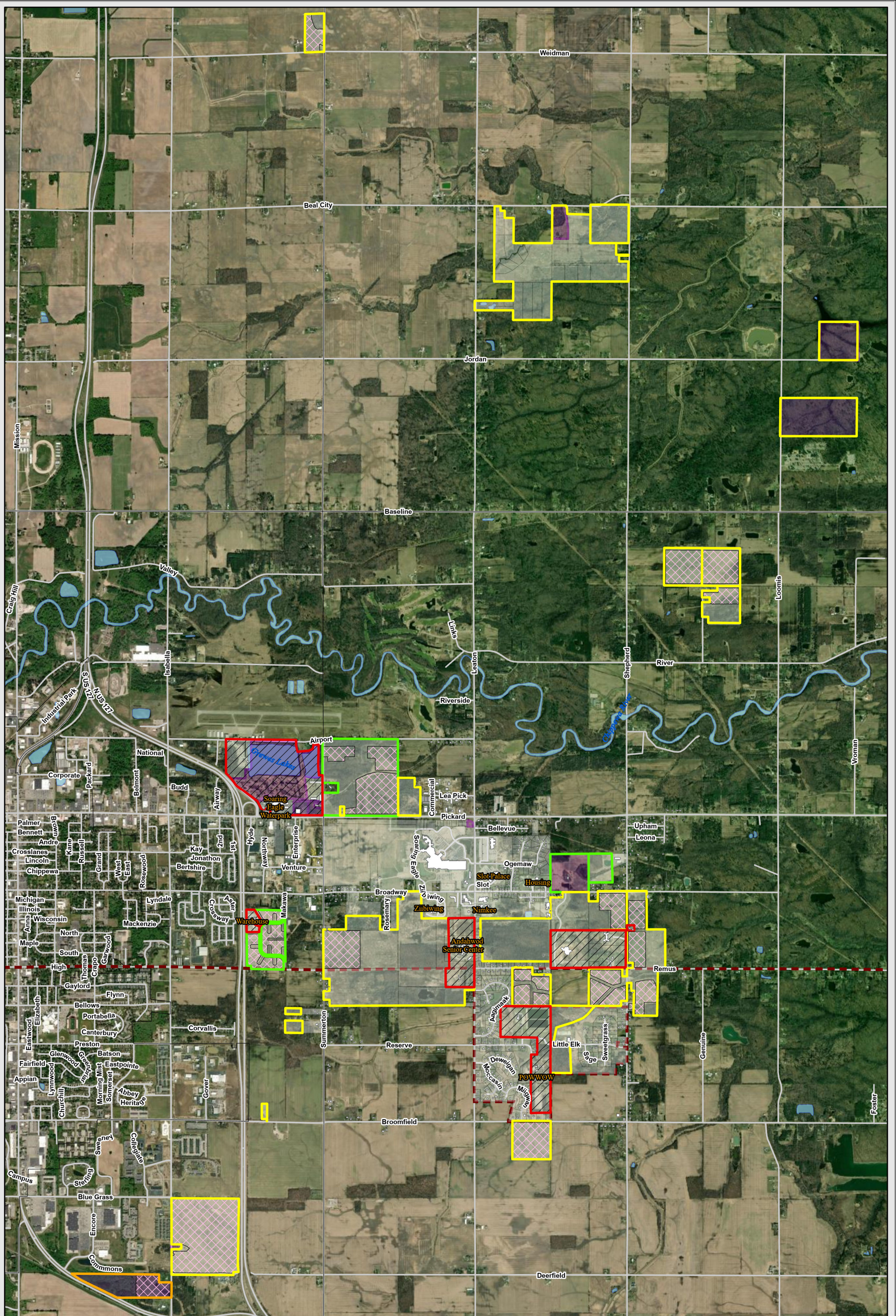


EXHIBIT C – Isabella County Open Lands Bow and Gun



Deer 2024-2025 Nov-Feb Zone	 Bow	SCIT Parcels
 Open MI Permit	 Open	 Land In Trust
 No Hunting	 Farm Leased *	 Non Trust
	 Reservation	
(*Permission required until harvest)		

Deer Season 2024 (Nov. 1st.- Feb. 1st.) SCIT Members Hunting Areas

N

The Saginaw Chippewa Indian Tribe makes no warranty expressed or implied, regarding the accuracy, completeness or usefulness of the information presented. Users of this information assume all liability of its fitness for a particular use.

Source: SCIT_Data 2024